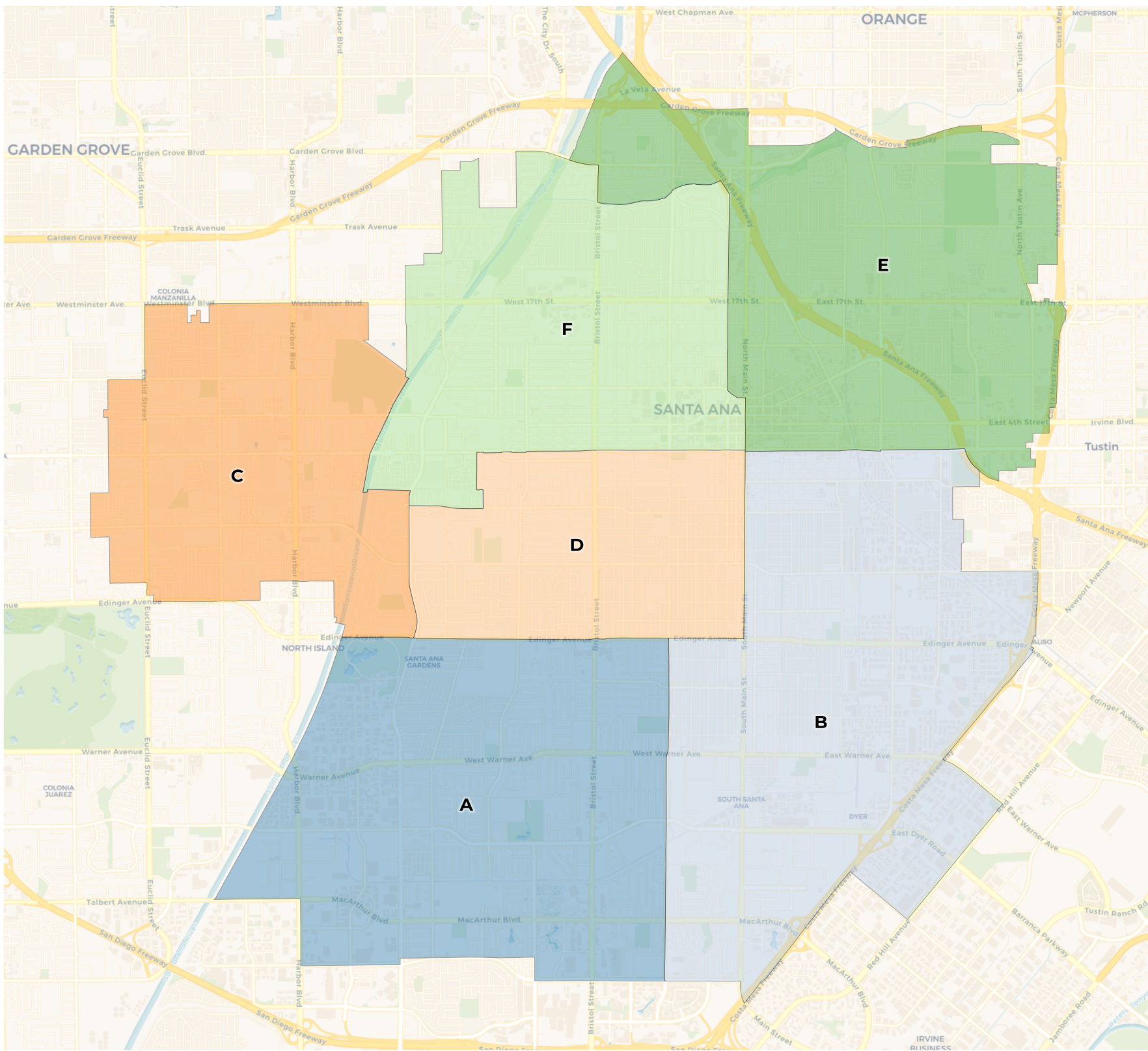




REDISTRICTING PARTNERS

City of Santa Ana Draft Plan B



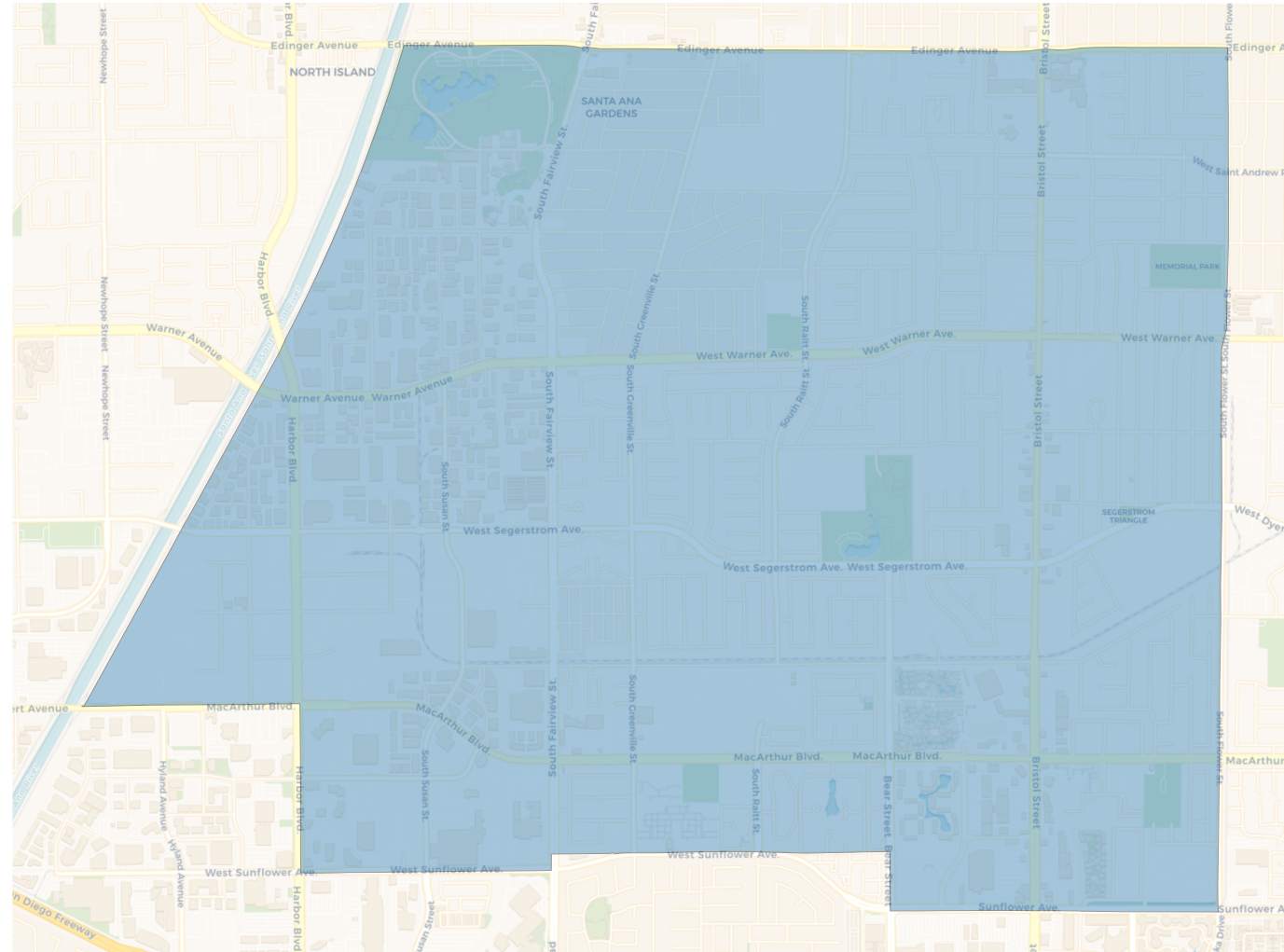
2020 Census

	A	B	C	D	E	F
Population	52,024	55,420	50,426	50,330	48,943	54,250
Deviation	125	3,521	-1,473	-1,569	-2,956	2,351
Deviation %	0.2%	6.8%	-2.8%	-3.0%	-5.7%	4.5%
Other	7,505	3,795	3,182	1,692	9,847	6,185
Other %	14.4%	6.8%	6.3%	3.4%	20.1%	11.4%
Latino	36,509	48,301	29,234	46,545	35,348	42,975
Latino %	70.2%	87.2%	58.0%	92.5%	72.2%	79.2%
Asian	7,425	2,976	17,701	1,745	3,152	4,458
Asian %	14.3%	5.4%	35.1%	3.5%	6.4%	8.2%
Black	585	348	309	348	596	632
Black %	1.1%	0.6%	0.6%	0.7%	1.2%	1.2%

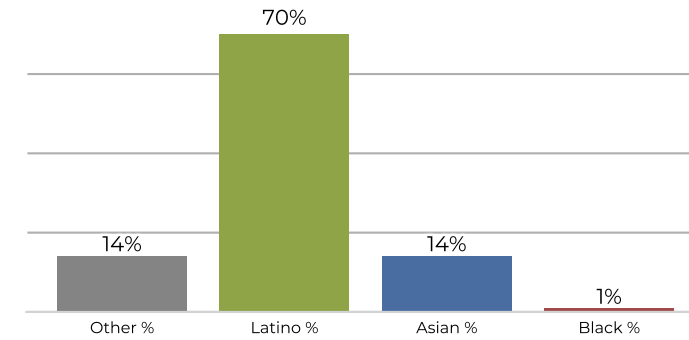
Citizen Voting Age Population (CVAP)

	A	B	C	D	E	F
Total CVAP	31,452	24,714	28,543	19,358	25,396	24,751
Other CVAP	7,593	3,661	3,119	1,512	9,514	5,120
Other CVAP %	24.1%	14.8%	10.9%	7.8%	37.5%	20.7%
Latino CVAP	17,902	18,548	12,966	16,264	13,236	15,903
Latino CVAP %	56.9%	75.1%	45.4%	84.0%	52.1%	64.3%
Asian CVAP	5,402	2,156	12,301	1,229	1,946	3,458
Asian CVAP %	17.2%	8.7%	43.1%	6.3%	7.7%	14.0%
Black CVAP	556	350	156	353	700	270
Black CVAP %	1.8%	1.4%	0.5%	1.8%	2.8%	1.1%

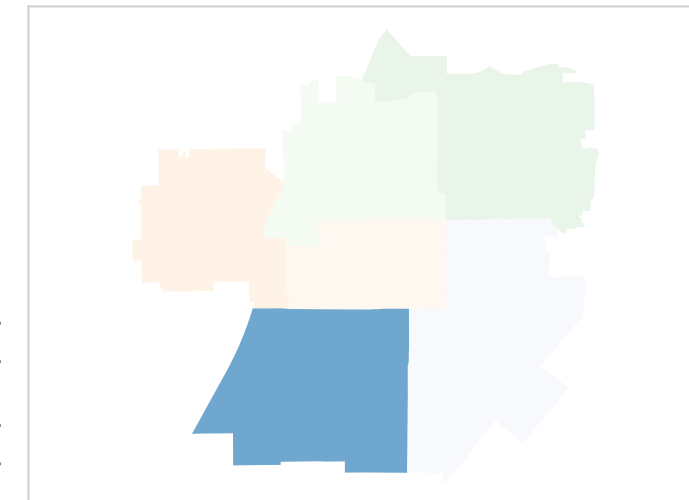
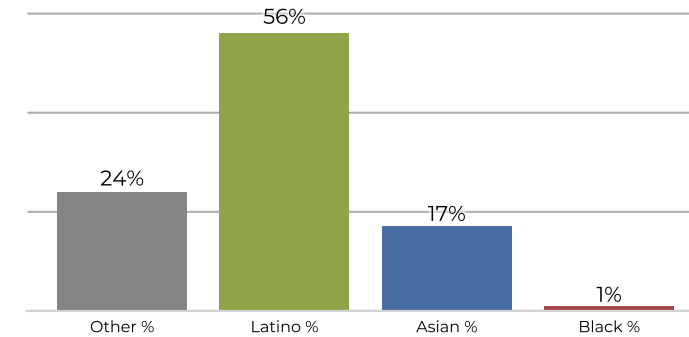
District A



2020 Census

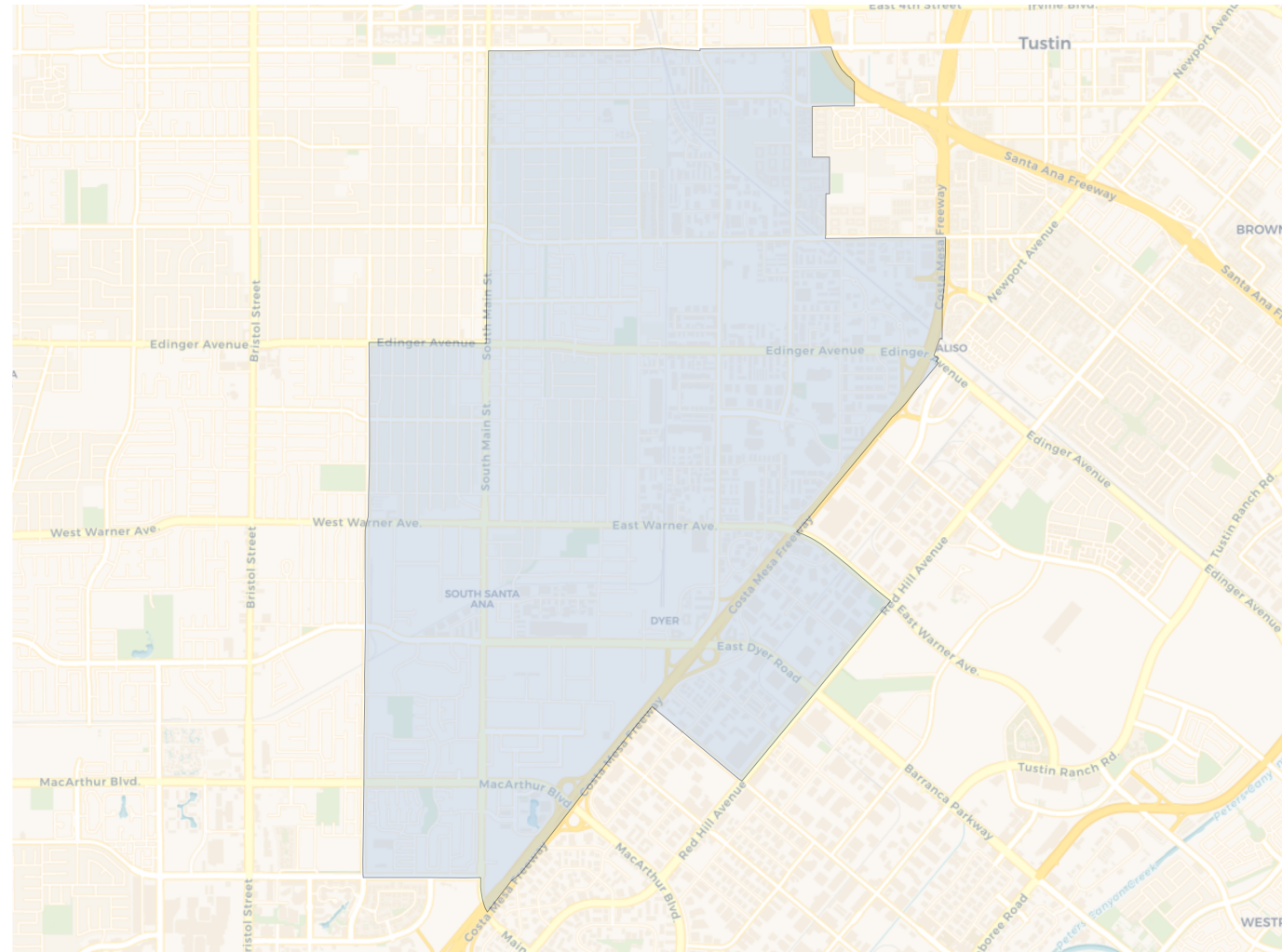


Citizen Voting Age Population

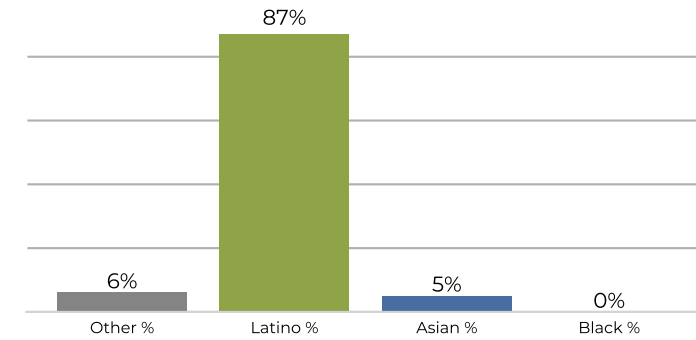


Population	Deviation	Deviation %	Other	Other %	Latino	Latino %	Asian	Asian %	Black	Black %
52,024	125	0.2%	7,505	14.4%	36,509	70.2%	7,425	14.3%	585	1.1%
Total CVAP	Other CVAP	Other CVAP %	Latino CVAP	Latino CVAP %	Asian CVAP	Asian CVAP %	Black CVAP	Black CVAP %		
31,452	7,593	24.1%	17,902	56.9%	5,402	17.2%	556	1.8%		

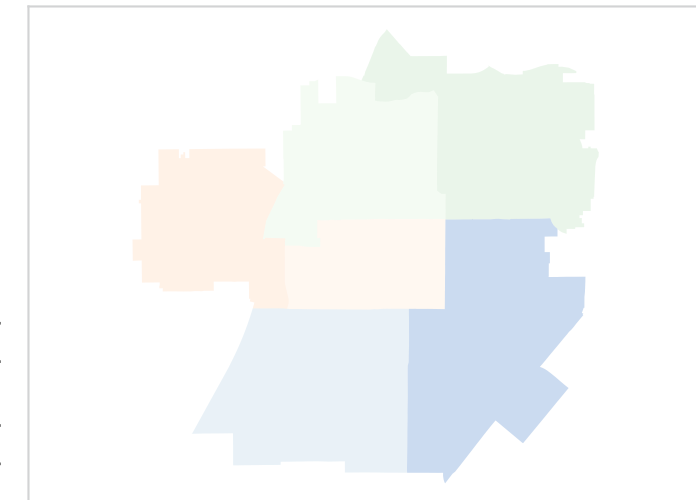
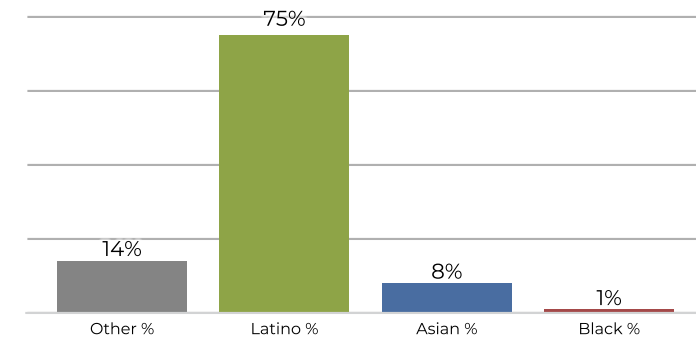
District B



2020 Census

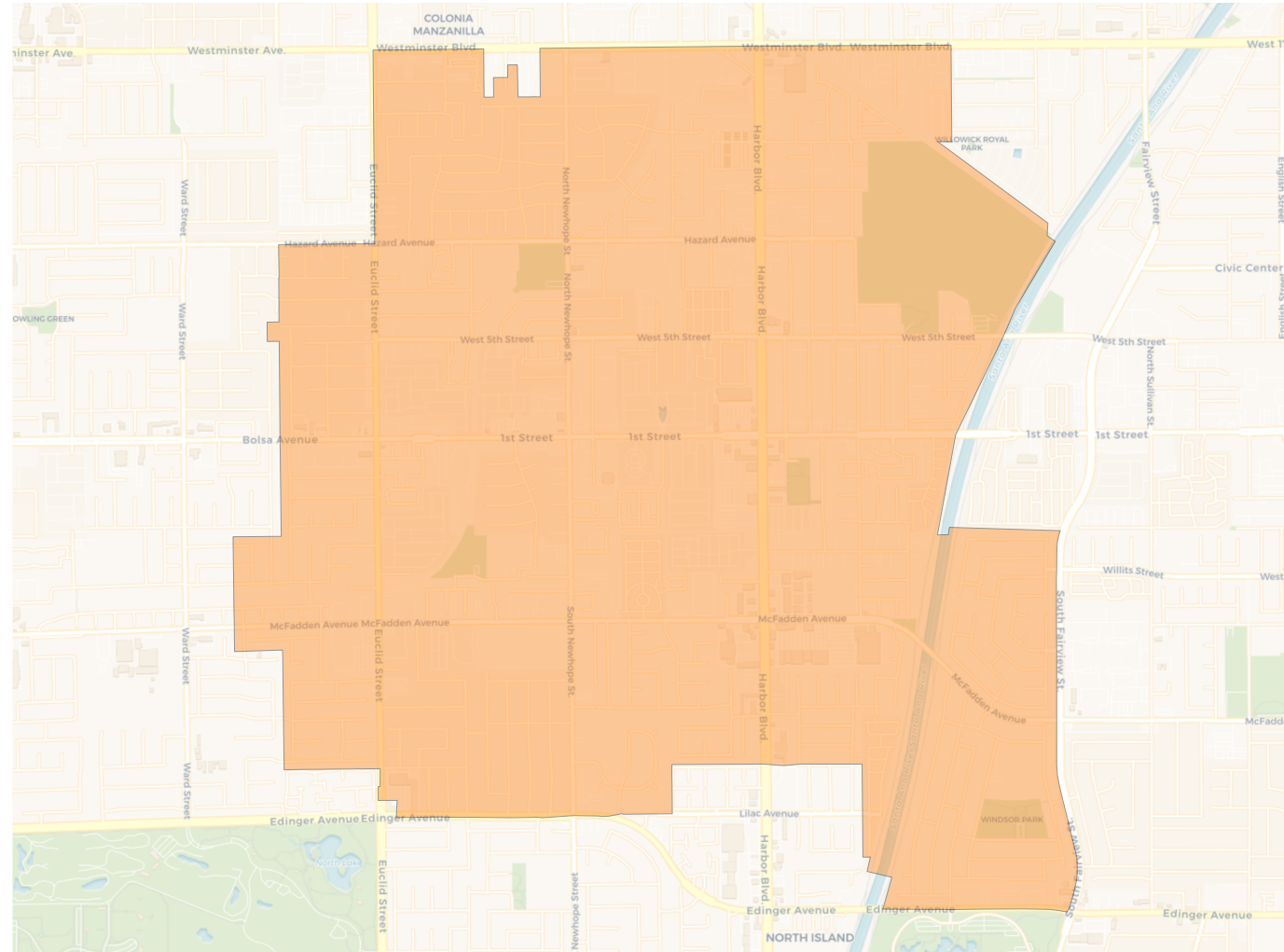


Citizen Voting Age Population

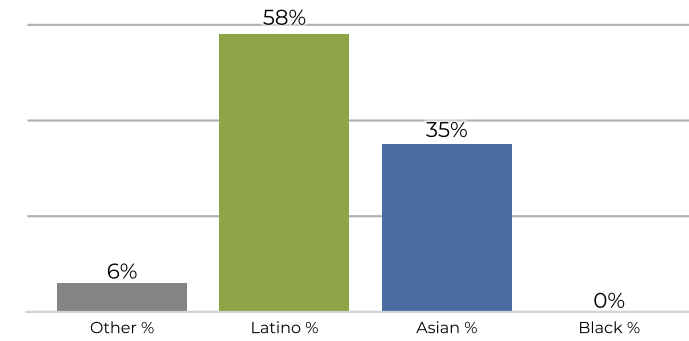


Population	Deviation	Deviation %	Other	Other %	Latino	Latino %	Asian	Asian %	Black	Black %
55,420	3,521	6.8%	3,795	6.8%	48,301	87.2%	2,976	5.4%	348	0.6%
Total CVAP	Other CVAP	Other CVAP %	Latino CVAP	Latino CVAP %	Asian CVAP	Asian CVAP %	Black CVAP	Black CVAP %		
24,714	3,661	14.8%	18,548	75.1%	2,156	8.7%	350	1.4%		

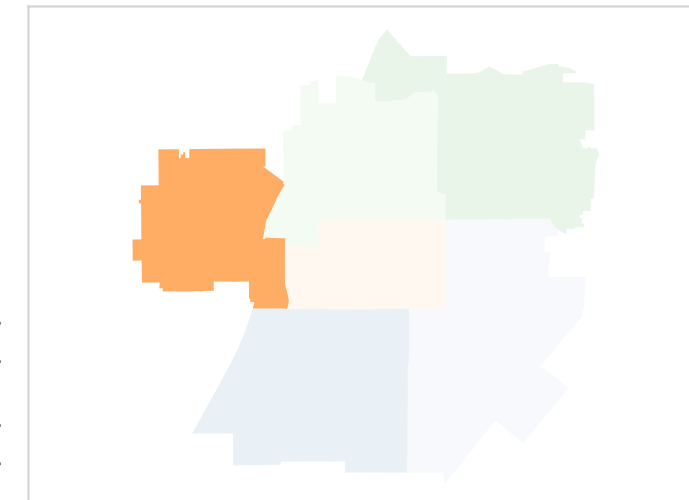
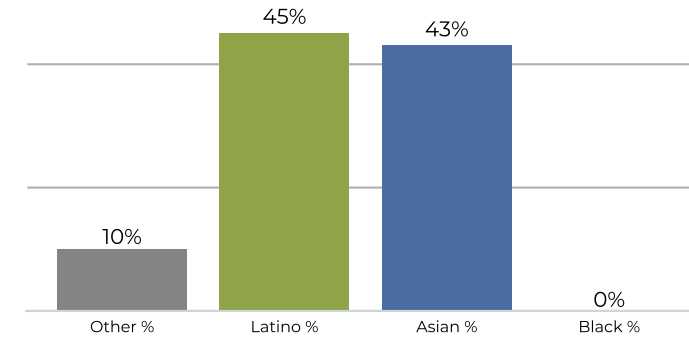
District C



2020 Census

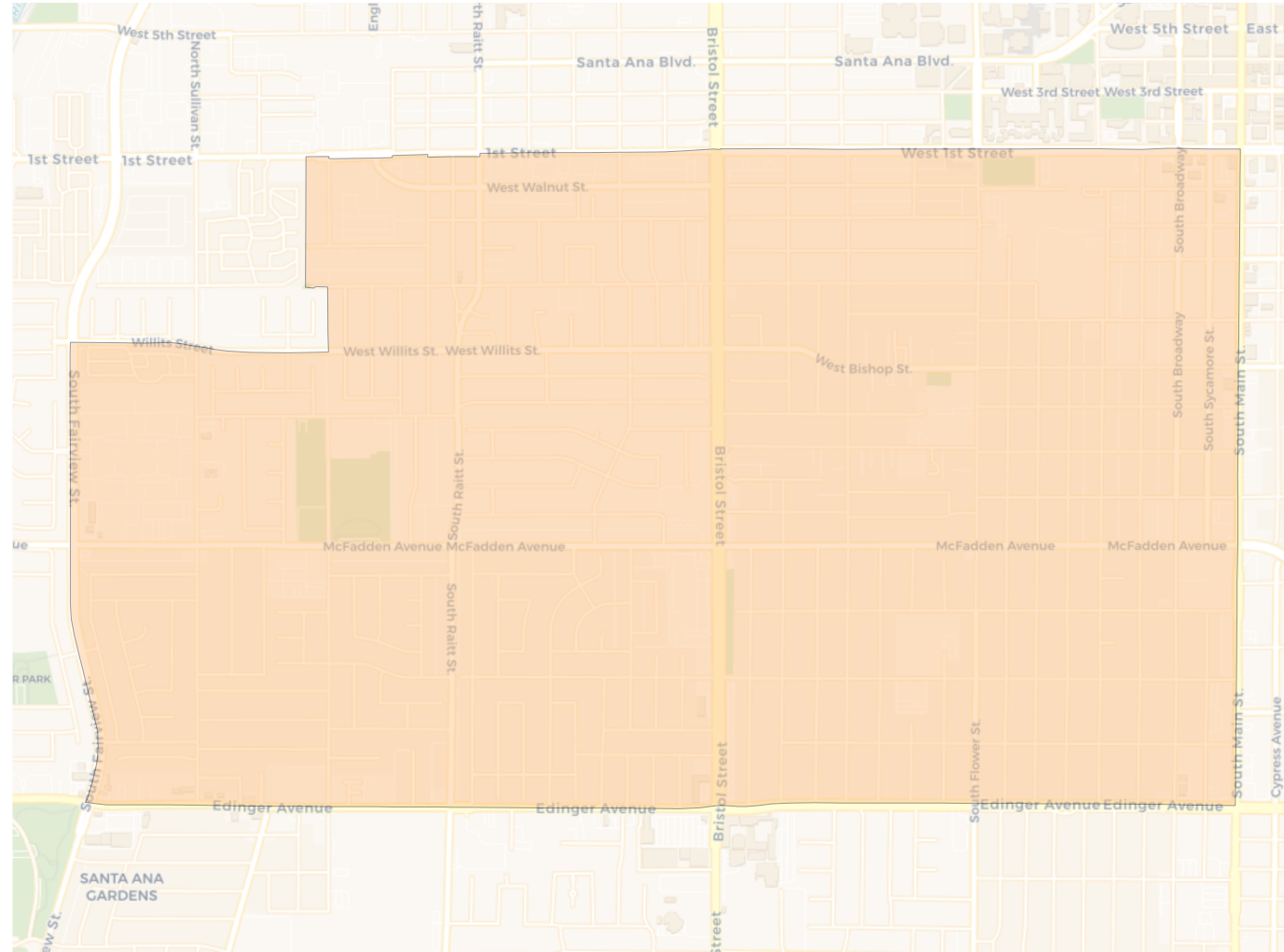


Citizen Voting Age Population

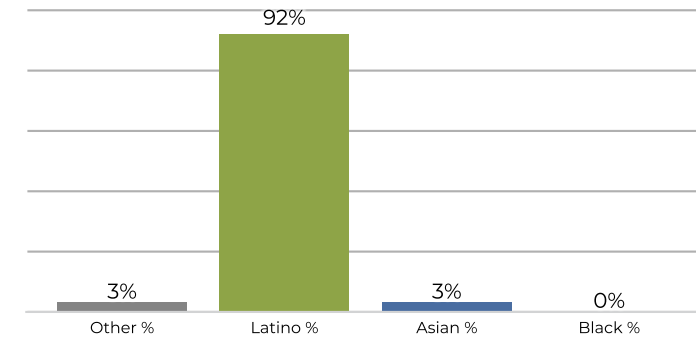


Population	Deviation	Deviation %	Other	Other %	Latino	Latino %	Asian	Asian %	Black	Black %
50,426	-1,473	-2.8%	3,182	6.3%	29,234	58.0%	17,701	35.1%	309	0.6%
Total CVAP	Other CVAP	Other CVAP %	Latino CVAP	Latino CVAP %	Asian CVAP	Asian CVAP %	Black CVAP	Black CVAP %		
28,543	3,119	10.9%	12,966	45.4%	12,301	43.1%	156	0.5%		

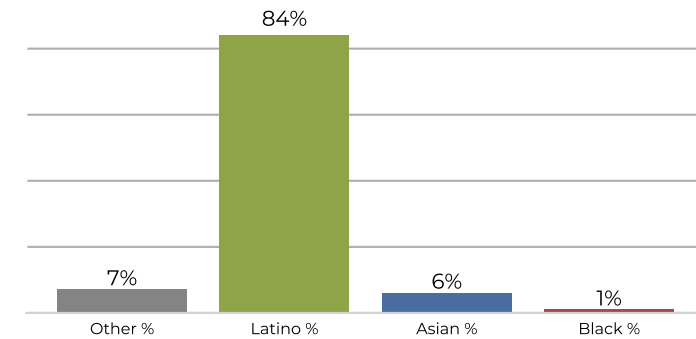
District D



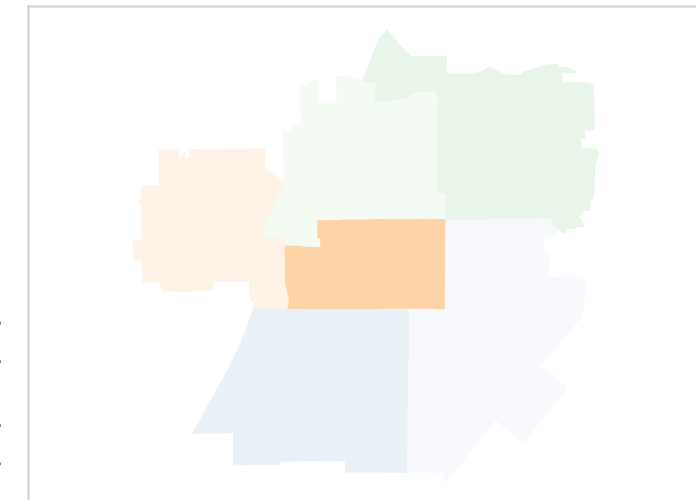
2020 Census



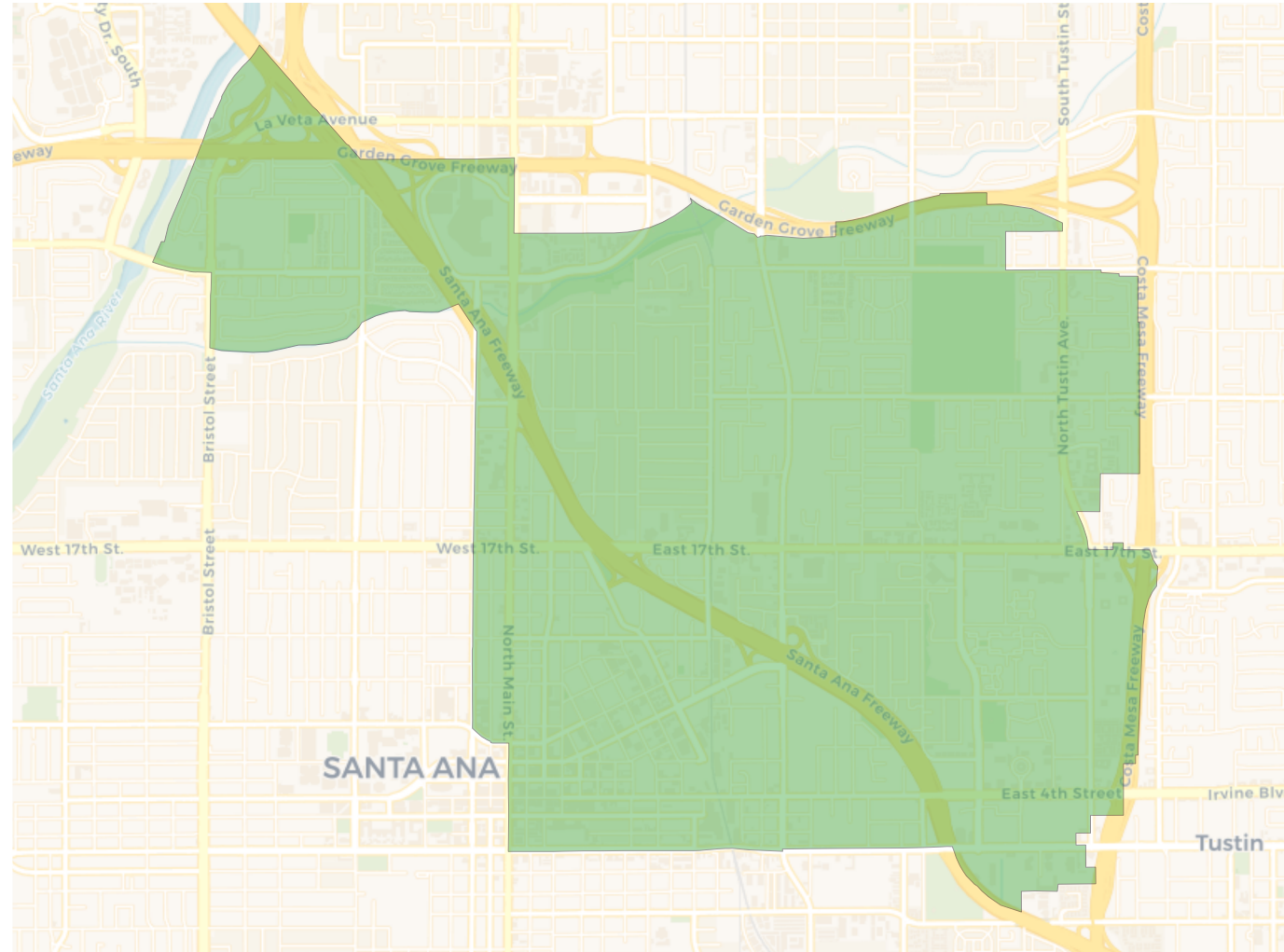
Citizen Voting Age Population



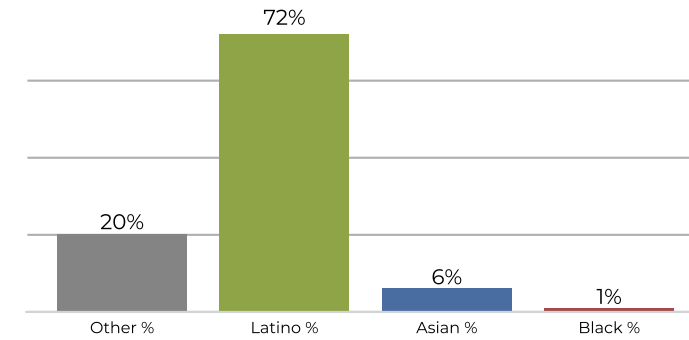
Population	Deviation	Deviation %	Other	Other %	Latino	Latino %	Asian	Asian %	Black	Black %
50,330	-1,569	-3.0%	1,692	3.4%	46,545	92.5%	1,745	3.5%	348	0.7%
Total CVAP	Other CVAP	Other CVAP %	Latino CVAP	Latino CVAP %	Asian CVAP	Asian CVAP %	Black CVAP	Black CVAP %		
19,358	1,512	7.8%	16,264	84.0%	1,229	6.3%	353	1.8%		



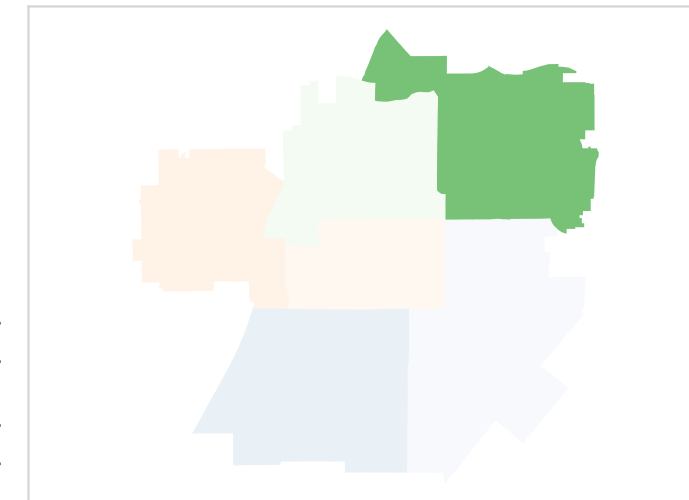
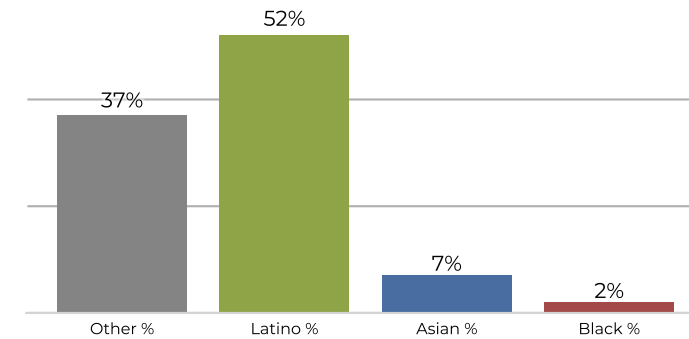
District E



2020 Census

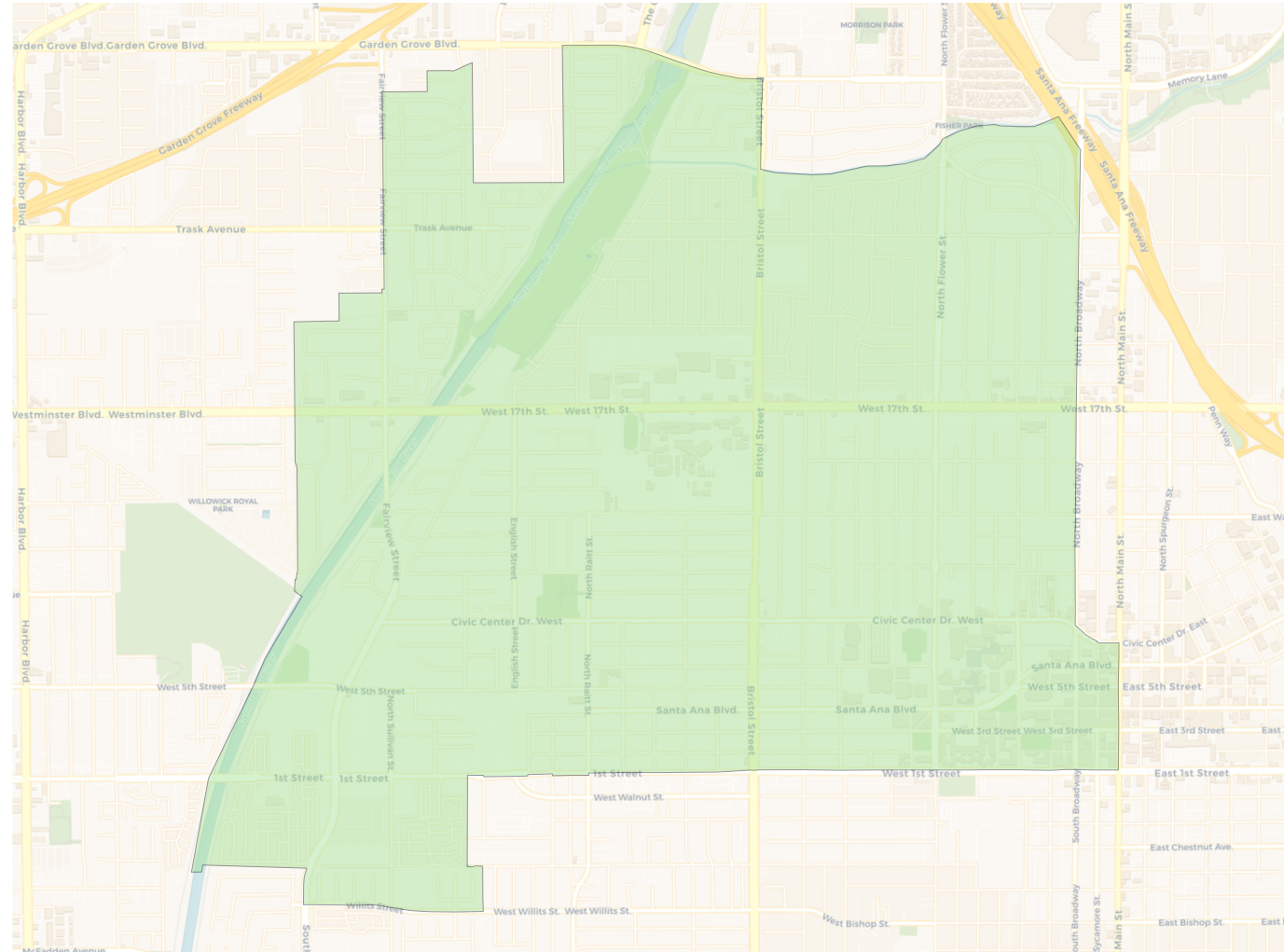


Citizen Voting Age Population

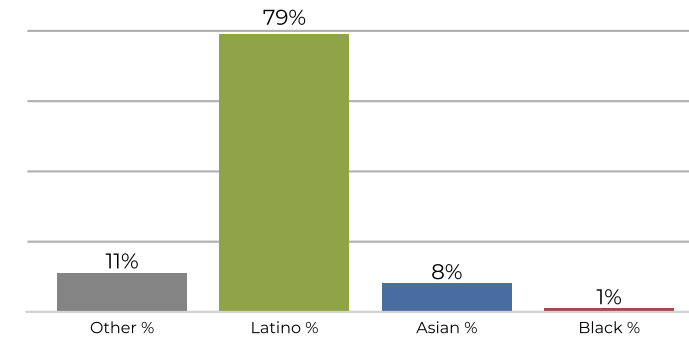


Population	Deviation	Deviation %	Other	Other %	Latino	Latino %	Asian	Asian %	Black	Black %
48,943	-2,956	-5.7%	9,847	20.1%	35,348	72.2%	3,152	6.4%	596	1.2%
Total CVAP	Other CVAP	Other CVAP %	Latino CVAP	Latino CVAP %	Asian CVAP	Asian CVAP %	Black CVAP	Black CVAP %		
25,396	9,514	37.5%	13,236	52.1%	1,946	7.7%	700	2.8%		

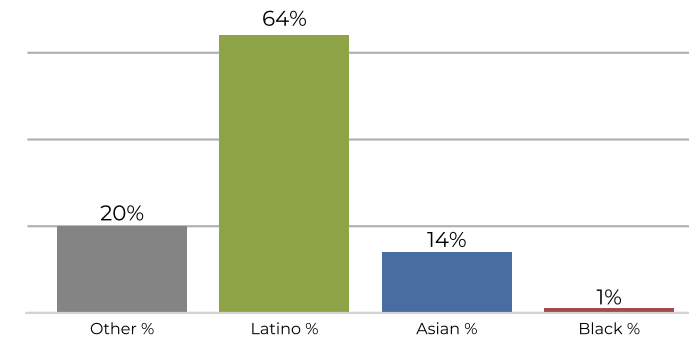
District F



2020 Census



Citizen Voting Age Population



Population	Deviation	Deviation %	Other	Other %	Latino	Latino %	Asian	Asian %	Black	Black %
54,250	2,351	4.5%	6,185	11.4%	42,975	79.2%	4,458	8.2%	632	1.2%
Total CVAP	Other CVAP	Other CVAP %	Latino CVAP	Latino CVAP %	Asian CVAP	Asian CVAP %	Black CVAP	Black CVAP %		
24,751	5,120	20.7%	15,903	64.3%	3,458	14.0%	270	1.1%		

